

**bibm**



*Towards climate-proof  
buildings*  
Concrete solutions

Dr Bernd Wolschner, BIBM president

Who we are



European Federation for  
Precast Concrete

- 16 National associations

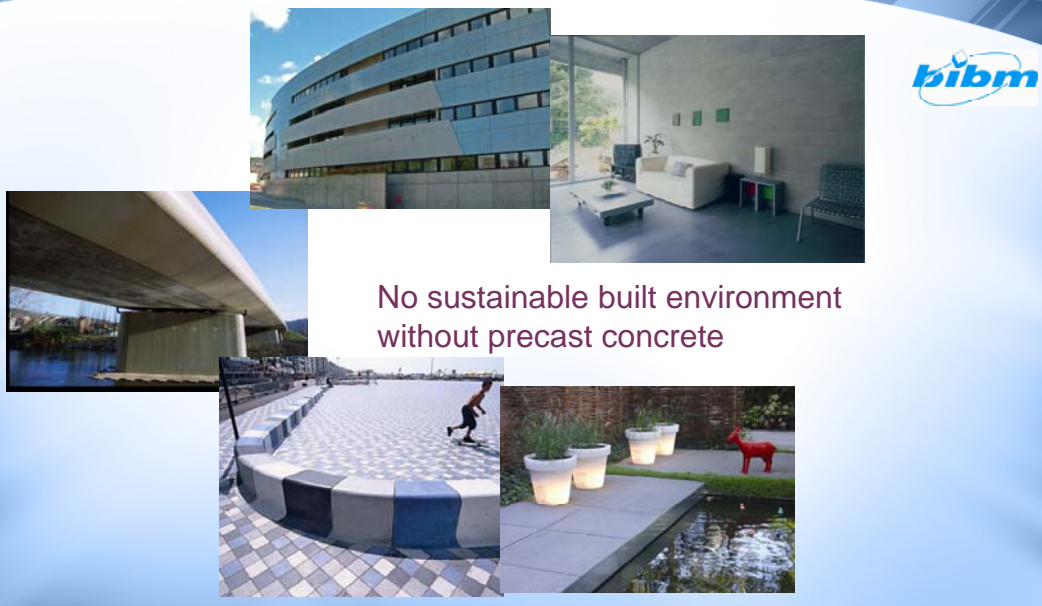
The industry

- 210.000 employees
- 8.000 production units
- > 30 billion € turnover

# What is precast concrete



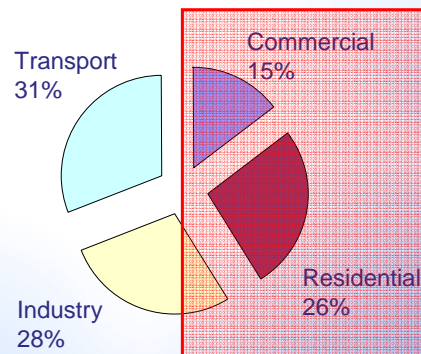
# What do we do



# Why we are here

## FACTS

- Climate is changing (fast)
- Building and Construction sector's impact is relevant
  - 40% of energy use
  - 80% of time spent indoor
- People expect to keep the same level of
  - Health
  - Comfort
  - Costs
- EU institutions active



EU Data 2005  
Source: MEMO/06/387

# Why we are here

## QUESTION

- In the *building sector*, what can we do to *adapt to* this changing situation, ensuring *improved conditions* for people in a *sustainable way*?



# Main Messages

1. Importance of **structure** in construction works
2. Precast concrete buildings better withstand **global warming**
3. **Strong and durable** materials resist extreme events and ensure longer lifetime
4. Precast concrete is best suited for **low energy buildings** and passive houses



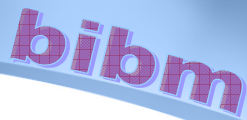
# Order of the lunch debate

## Speeches

- Precast concrete: contribution to climate-proof buildings  
*Prof. Gudni Jóhannesson*
- Practical advice and examples  
*Dr. Jacqueline Glass*

## Debate – Exchange of views



The logo for bibm, consisting of the lowercase letters 'bibm' in a bold, sans-serif font. The letters are dark blue with a light blue gradient and a subtle drop shadow. The logo is positioned in the upper right corner of a blue, curved banner that spans the top of the slide.

Many thanks for your  
participation

More info on: [www.bibm.eu](http://www.bibm.eu)